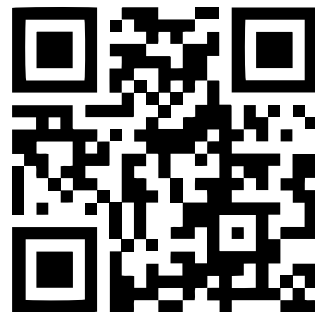




MADE IN U.A.E.



OFFICIAL PRODUCT
REALMIX®



EXPORT CATALOGUE

www.realmix-group.com

REALMIX

TOKYO STYLE
MATCHA CHERRY SAKURA
100g



Nutritional information per 100g

Energy value	2446 kJ (587 kcal)
Fat	40 g
Of which saturated fats	20 g
Carbohydrates	50 g
Of which sugars	49 g
Protein	6,4 g
Salt	0,23 g



UBE SWEET YAM

Made from premium purple yam (UBE), this Tokyo-style crispy chocolate delivers a rich, naturally sweet, and uniquely creamy flavor experience in every bite.



VANILLA

Filled with smooth and creamy vanilla flavor and combined with crispy puffed rice, this Tokyo-style chocolate delivers the perfect balance of sweetness and crunch in every bite.

BIOLOGICAL CHARACTERS:

Microorganisms	Limit per ml or gram			
	n	c	m	M
- Aerobic plate count	5	2	10 ⁴	10 ⁶
- Enterobacteriaceae	5	2	0	10
- Salmonella	10	0	0	-
- Moulds	5	2	10 ²	10 ⁴
- Escherichia coli	5	2	0	10

INGREDIENTS:

Cocoa butter, sugar, whole milk powder, palm oil, vanilla (20%), wheat flour, puffed rice, purple sweet potato powder (2%), emulsifier: lecithin (soy), vanillin, salt, flavourings, colours: E102, E129: may have an adverse effect on activity and attention in children. Store in a dry place, protected from heat and temperature fluctuations. Best before: see below.

ALLERGEN INGREDIENTS:

Contains gluten, milk, & soy. Can contain traces of hazelnut, sesame, peanuts, almond & pistachios.

PHYSICAL CHARACTERS:

Appearance: The chocolate features an elegant, ube-inspired purple color with a glossy finish.

Aroma: A delicate aroma of white chocolate blends with subtle notes of ube sweet potato and crispy puffed rice.

Mouthfeel: The chocolate melts smoothly on the tongue as the filling reveals a creamy and slightly fluid texture.

Texture: Firm and smooth on the outside, soft and creamy on the inside with a velvety caramel texture.

Breakage: The chocolate snaps cleanly with a fine crack, reflecting the freshness of the outer shell.

Crumb Structure: The crumb structure is compact and fine, with no visible inclusions, indicating high-quality craftsmanship.

REALMIX

TOKYO STYLE
BLACK SESAME MILK BAR
100g



Nutritional information per 100g

Energy value	2446 kJ (587 kcal)
Fat	40 g
Of which saturated fats	20 g
Carbohydrates	50 g
Of which sugars	49 g
Protein	6,4 g
Salt	0,23 g



BLACK SESAME

Made with finely roasted black sesame seeds, blended into a rich and creamy paste filling, this Tokyo-style chocolate delivers a deep nutty aroma and smooth flavor in every bite



PUFFED RICE

Made with light and crunchy puffed rice, this Tokyo-style chocolate delivers an airy crisp texture that makes every bite extra satisfying.

BIOLOGICAL CHARACTERS:

Microorganisms	Limit per ml or gram			
	n	c	m	M
- Aerobic plate count	5	2	10 ⁴	10 ⁶
- Enterobacteriaceae	5	2	0	10
- Salmonella	10	0	0	-
- Moulds	5	2	10 ²	10 ⁴
- Escherichia coli	5	2	0	10

INGREDIENTS:

Cocoa mass, cocoa butter, cocoa powder, sugar, whole milk powder, water, corn starch, palm oil, black sesame (20%), wheat flour, puffed rice, emulsifier: lecithin (soy), vanillin, salt, flavourings, colours: E102, E129: may have an adverse effect on activity and attention in children. Store in a dry place, protected from heat and temperature fluctuations. Best before: see below.

ALLERGEN INGREDIENTS:

Contains gluten, milk, & soy. Can contain traces of hazelnut, sesame, peanuts, almond & pistachios.

PHYSICAL CHARACTERS:

Appearance: The chocolate features an elegant, milk chocolate-color with a glossy finish.

Aroma: A delicate aroma of white chocolate blends with subtle notes of black sesame and crispy puffed rice.

Mouthfeel: The chocolate melts smoothly on the tongue as the filling reveals a creamy and slightly fluid texture.

Texture: Firm and smooth on the outside, soft and creamy on the inside with a velvety caramel texture.

Breakage: The chocolate snaps cleanly with a fine crack, reflecting the freshness of the outer shell.

Crumb Structure: The crumb structure is compact and fine, with no visible inclusions, indicating high-quality craftsmanship.

REALMIX

Drumstick Bar

50g

REALMIX



Nutritional information per 100g

Energy value	2260kJ (540 kcal)
Fat	30 g
Of which saturated fats	18 g
Carbohydrates	60 g
Of which sugars	52 g
Protein	6,5 g
Salt	0,24 g



INGREDIENTS:

cocoa mass, cocoa butter, cocoa powder, sugar, skimmed milk powder, caramelised biscuit crumbs (15%) (wheat flour, sugar, vegetable oils (soy, sunflower, rapeseed, palm), brown sugar syrup, sodium hydrogen carbonate (raising agent), soy flour, salt, cinnamon), water, salt, emulsifier: lecithin (soy), vanillin. Store in a dry, cool place and protect from heat and temperature fluctuations. Best before: see below. May contain traces of sesame and other nuts.

ALLERGEN INGREDIENTS:

Contains gluten, milk, & soy. Can contain traces of hazelnut, sesame, peanuts, almond & pistachios.

PHYSICAL CHARACTERS:

Appearance: Chicken drumstick-shaped confection with a golden-brown, crispy-textured coating over a smooth chocolate layer.

Aroma: Sweet milk chocolate aroma with creamy dairy notes and a hint of toasted cereal.

Mouthfeel: Smooth melting chocolate shell with a creamy, slightly flowing milk filling.

Texture: Crunchy exterior contrasts with a soft, creamy chocolate and milk center.

Breakage: Soft chocolate snap followed by a light crackle from the crispy coating.

Crumb Structure: Smooth, uniform filling with an evenly distributed crispy outer layer.

REALMIX

TOKYO STYLE
MATCHA CHERRY SAKURA
100g



Nutritional information per 100g

Energy value	2446 kJ (587 kcal)
Fat	40 g
Of which saturated fats	20 g
Carbohydrates	50 g
Of which sugars	49 g
Protein	6,4 g
Salt	0,23 g



MATCHA HERB

Experience the rich tradition of Japan, crafted using authentically grown Japanese matcha herbs. Each bite delivers pure, earthy flavor and centuries-old wellness in one convenient piece of chocolate.



CHERRY

Experience the luscious sweetness of sun-ripened cherries, delicately intertwined with the soft elegance of cherry blossoms. Each bite reveals a juicy, vibrant flavor that perfectly contrasts the rich, velvety depth of Tokyo-style matcha.

BIOLOGICAL CHARACTERS:

Microorganisms	Limit per ml or gram			
	n	c	m	M
- Aerobic plate count	5	2	10 ⁴	10 ⁶
- Enterobacteriaceae	5	2	0	10
- Salmonella	10	0	0	-
- Moulds	5	2	10 ²	10 ⁴
- Escherichia coli	5	2	0	10

INGREDIENTS:

Sugar, palm fat, cocoa butter, whole milk powder, skimmed milk yogurt powder (8.5%), lactose, cherries (2.5%), anhydrous milk fat, cherry blossom extract, green tea powder (1.5%), cream powder, maltodextrin, emulsifier: lecithins (soy). Note: "May affect activity and attention in children." Store in a dry, cool place and protect from heat and temperature fluctuations.

ALLERGEN INGREDIENTS:

Contains gluten, milk, & soy. Can contain traces of hazelnut, sesame, peanuts, almond & pistachios.

PHYSICAL CHARACTERS:

Appearance: The chocolate features an elegant, matcha-inspired light green color with a glossy finish.

Aroma: A delicate aroma of white chocolate blends with subtle notes of green tea and roasted pistachios.

Mouthfeel: The chocolate melts smoothly on the tongue as the filling reveals a creamy and slightly fluid texture.

Texture: Firm and smooth on the outside, soft and creamy on the inside with a velvety caramel texture.

Breakage: The chocolate snaps cleanly with a fine crack, reflecting the freshness of the outer shell.

Crumb Structure: The crumb structure is compact and fine, with no visible inclusions, indicating high-quality craftsmanship.

REALMIX

TOKYO STYLE
MATCHA STRAWBERRY
100g



Nutritional information per 100g

Energy value	2446 kJ (587 kcal)
Fat	40 g
Of which saturated fats	20 g
Carbohydrates	50 g
Of which sugars	49 g
Protein	6,4 g
Salt	0,23 g



MATCHA HERB

Experience the rich tradition of Japan, crafted using authentically grown Japanese matcha herbs. Each bite delivers pure, earthy flavor and centuries-old wellness in one convenient piece of chocolate.



STRAWBERRY

Experience the vibrant sweetness of sun-ripened strawberries, handpicked for perfect balance. Each bite bursts with fresh, juicy flavor — a bright contrast to rich Tokyo-style matcha in every piece of chocolate.

BIOLOGICAL CHARACTERS:

Microorganisms	Limit per ml or gram			
	n	c	m	M
- Aerobic plate count	5	2	10 ⁴	10 ⁶
- Enterobacteriaceae	5	2	0	10
- Salmonella	10	0	0	-
- Moulds	5	2	10 ²	10 ⁴
- Escherichia coli	5	2	0	10

INGREDIENTS:

Sugar, palm fat, cocoa butter, whole milk powder, skimmed milk yogurt powder (8.5%), lactose, strawberries (2.5%), anhydrous milk fat, green tea powder (1.5%), cream powder, maltodextrin, emulsifier: lecithins (soy). Note: "May affect activity and attention in children." Store in a dry, cool place and protect from heat and temperature fluctuations.

ALLERGEN INGREDIENTS:

Contains gluten, milk, & soy. Can contain traces of hazelnut, sesame, peanuts, almond & pistachios.

PHYSICAL CHARACTERS:

Appearance: The chocolate features an elegant, matcha-inspired light green color with a glossy finish.

Aroma: A delicate aroma of white chocolate blends with subtle notes of green tea and roasted pistachios.

Mouthfeel: The chocolate melts smoothly on the tongue as the filling reveals a creamy and slightly fluid texture.

Texture: Firm and smooth on the outside, soft and creamy on the inside with a velvety caramel texture.

Breakage: The chocolate snaps cleanly with a fine crack, reflecting the freshness of the outer shell.

Crumb Structure: The crumb structure is compact and fine, with no visible inclusions, indicating high-quality craftsmanship.

REALMIX

TOKYO STYLE MATCHA PISTACHIO

100g



Nutritional information per 100g

Energy value	1883 kJ (450 kcal)
Fat	30 g
Of which saturated fats	15 g
Carbohydrates	50 g
Of which sugars	30 g
Protein	5,4 g
Salt	0,1 g



MATCHA HERB

Experience the rich tradition of Japan, crafted using authentically grown Japanese matcha herbs. Each bite delivers pure, earthy flavor and centuries-old wellness in one convenient piece of chocolate.



PISTACHIOS

Known as the “green gold” of the Middle East, pistachios bring a rich, nutty flavor and a velvety texture to every bite. Sourced for their premium quality, they form the heart of our luxurious pistachio cream filling.

BIOLOGICAL CHARACTERS:

Microorganisms	Limit per ml or gram			
	n	c	m	M
- Aerobic plate count	5	2	10 ⁴	10 ⁶
- Enterobacteriaceae	5	2	0	10
- Salmonella	10	0	0	-
- Moulds	5	2	10 ²	10 ⁴
- Escherichia coli	5	2	0	10

INGREDIENTS:

Cocoa butter, sugar, whole milk powder, palm oil, pistachio (20%), wheat flour, puffed rice, matcha green tea powder (2%), emulsifier: lecithin (soy), vanillin, salt, flavourings, colours: E102, E129: may have an adverse effect on activity and attention in children. Store in a dry place, protected from heat and temperature fluctuations.

ALLERGEN INGREDIENTS:

Contains milk, & soy. Can contain traces of hazelnut, sesame, peanuts, almond & pistachios.

PHYSICAL CHARACTERS:

Appearance: The chocolate features an elegant, matcha-inspired light green color with a glossy finish.

Aroma: A delicate aroma of white chocolate blends with subtle notes of green tea and roasted pistachios.

Mouthfeel: The chocolate melts smoothly on the tongue as the filling reveals a creamy and slightly fluid texture.

Texture: Firm and smooth on the outside, soft and creamy on the inside with a velvety caramel texture.

Breakage: The chocolate snaps cleanly with a fine crack, reflecting the freshness of the outer shell.

Crumb Structure: The crumb structure is compact and fine, with no visible inclusions, indicating high-quality craftsmanship.

REALMIX

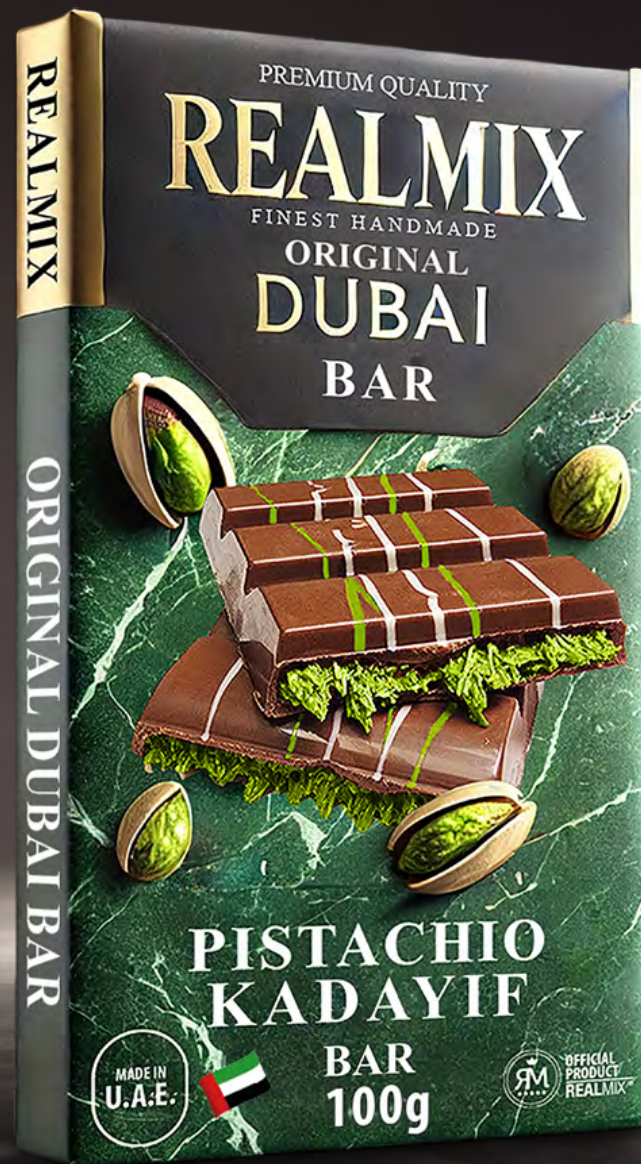
ORIGINAL DUBAI BAR

100g



Nutritional information per 100g

Energy value	2309 kJ (552 kcal)
Fat	33 g
Of which saturated fats	19 g
Carbohydrates	53 g
Of which sugars	40 g
Protein	11 g
Salt	0,051 g



KADAYIF

Delicate and crispy, kadayif is a traditional Middle Eastern pastry that adds a unique crunch and an irresistible golden sweetness. Blended into our filling, it creates a perfect harmony of texture and flavor.



PISTACHIOS

Known as the "green gold" of the Middle East, pistachios bring a rich, nutty flavor and a velvety texture to every bite. Sourced for their premium quality, they form the heart of our luxurious pistachio cream filling.

BIOLOGICAL CHARACTERS:

Microorganisms	Limit per ml or gram			
	n	c	m	M
- Aerobic plate count	5	2	10 ⁴	10 ⁶
- Enterobacteriaceae	5	2	0	10
- Salmonella	10	0	0	-
- Moulds	5	2	10 ²	10 ⁴
- Escherichia coli	5	2	0	10

INGREDIENTS:

Cocoa mass, cocoa butter, cocoa powder, sugar, skimmed milk powder, pistachios (10%), wheat flour, water, corn starch, hazelnuts, salt, emulsifier: lecithin (soy), vanillin. Notice: "May impair activity and attention in children."

ALLERGEN INGREDIENTS:

Contains gluten, milk, & soy. Can contain traces of hazelnut, sesame, peanuts, almond & pistachios.

PHYSICAL CHARACTERS:

Appearance: smooth surface; color from light brown (milk) to dark brown (dark).

Aroma: A sweet, buttery aroma from the kunafa, combined with the rich, chocolaty scent.

Mouthfeel: A delightful contrast between the crisp, flaky kunafa and the creamy chocolate base, with a balanced sweetness.

Texture: The kunafa layer provides a crispy, flaky texture, while the chocolate base is smooth and rich.

Breakage: Breaks cleanly with a crisp sound.

Crumb Structure: Consistent, without air pockets or large voids.

REALMIX

ORIGINAL DUBAI BAR

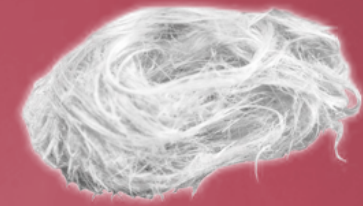
ANGEL HAIR

100g



Nutritional information per 100g

Energy value	2260 kJ (540 kcal)
Fat	30 g
Of which saturated fats	10 g
Carbohydrates	62 g
Of which sugars	59 g
Protein	11 g
Salt	0,2 g



ANGEL HAIR

Light as a cloud and sweet as a dream, Angel Hair is delicate spun sugar in soft pink and white, melting effortlessly on your tongue for a magical taste experience.



PISTACHIOS

Known as the “green gold” of the Middle East, pistachios bring a rich, nutty flavor and a velvety texture to every bite. Sourced for their premium quality, they form the heart of our luxurious pistachio cream filling.

BIOLOGICAL CHARACTERS:

Microorganisms	Limit per ml or gram			
	n	c	m	M
- Aerobic plate count	5	2	10 ⁴	10 ⁶
- Enterobacteriaceae	5	2	0	10
- Salmonella	10	0	0	-
- Moulds	5	2	10 ²	10 ⁴
- Escherichia coli	5	2	0	10

INGREDIENTS:

Cocoa butter, sugar, skimmed milk powder, palm oil, pistachio (10%), pastry strands (wheat flour), water, raspberry flavouring, colours: E102, E124, E129, E133, E163, cotton candy (sugar, wheat flour), emulsifier: lecithin (soy), vanilla. “E102, E124, E129: may have an adverse effect on activity and attention in children.” Store in a dry place. May contain traces of other nuts and sesame. Protect from heat and temperature fluctuations.

ALLERGEN INGREDIENTS:

Milk, pistachios, wheat, soy. May contain traces of other nuts and sesame.

PHYSICAL CHARACTERS:

Appearance: Smooth, glossy surface with a delicate pink hue, contrasted by fine strands of angel hair.

Aroma: A sweet, fruity raspberry fragrance with subtle hints of creamy white chocolate.

Mouthfeel: A delightful interplay of airy, cotton-like angel hair and velvety pistachio crème, melting effortlessly.

Texture: Light and fluffy angel hair contrasts with the smooth, creamy filling and firm white chocolate shell.

Breakage: Snaps cleanly, with delicate strands of angel hair pulling apart softly.

Crumb Structure: Uniform, with fine, delicate fibers of angel hair evenly distributed within the chocolate.

REALMIX

ORIGINAL DUBAI

WHITE BAR

100g



Nutritional information per 100g

Energy value	1883 kJ (450 kcal)
Fat	30 g
Of which saturated fats	15 g
Carbohydrates	50 g
Of which sugars	30 g
Protein	5,4 g
Salt	0,1 g



KADAYIF

Delicate and crispy, kadayif is a traditional Middle Eastern pastry that adds a unique crunch and an irresistible golden sweetness. Blended into our filling, it creates a perfect harmony of texture and flavor.



PISTACHIOS

Known as the “green gold” of the Middle East, pistachios bring a rich, nutty flavor and a velvety texture to every bite. Sourced for their premium quality, they form the heart of our luxurious pistachio cream filling.

BIOLOGICAL CHARACTERS:

Microorganisms	Limit per ml or gram			
	n	c	m	M
- Aerobic plate count	5	2	10 ⁴	10 ⁶
- Enterobacteriaceae	5	2	0	10
- Salmonella	10	0	0	-
- Moulds	5	2	10 ²	10 ⁴
- Escherichia coli	5	2	0	10

INGREDIENTS:

Cocoa mass, cocoa butter, cocoa powder, sugar, skimmed milk powder, pistachios (10%), wheat flour, water, corn starch, hazelnuts, salt, emulsifier: lecithin (soy), vanillin. Notice: “May impair activity and attention in children.”

ALLERGEN INGREDIENTS:

Contains milk, & soy. Can contain traces of hazelnut, sesame, peanuts, almond & pistachios.

PHYSICAL CHARACTERS:

Appearance: smooth surface; creamy white-color with a smooth, slightly glossy surface.

Aroma: A sweet, buttery aroma from the kunafa, combined with the rich, chocolaty scent.

Mouthfeel: A delightful contrast between the crisp, flaky kunafa and the creamy chocolate base, with a balanced sweetness.

Texture: The kunafa layer provides a crispy, flaky texture, while the chocolate base is smooth and rich.

Breakage: Breaks cleanly with a crisp sound.

Crumb Structure: Consistent, without air pockets or large voids.

REALMIX

MATCHA LATTE STICKS

24x 16g



Nutritional information per 100g

Energy value	1749 kJ (414 kcal)
Fat	6,4 g
Of which saturated fats	5,5 g
Carbohydrates	78 g
Of which sugars	65 g
Dietary fibers	2,7 g
Protein	9,7 g
Salt	0,36 g



MATCHA HERB

Experience the rich tradition of Japan with REALMIX Matcha Latte Sticks, crafted using authentically grown Japanese matcha herbs. Each sip delivers pure, earthy flavor and centuries-old wellness in one convenient stick.

INGREDIENTS:

Sugar, instant skimmed MILK powder, whey powder (MILK), glucose syrup, coconut fat, matcha powder 7%, maltodextrin, anti-caking agent: E551, modified starch E1450, stabiliser E 340, E 452, MILK protein, emulsifier E 472e, colourant: E141, beta caroten E160a.
May contain traces of gluten, soy and milk. Store in a cool, dry place.

REALMIX

MATCHA LATTE STICKS

10x 16g



Nutritional information per 100g

Energy value	1749 kJ (414 kcal)
Fat	6,4 g
Of which saturated fats	5,5 g
Carbohydrates	78 g
Of which sugars	65 g
Dietary fibers	2,7 g
Protein	9,7 g
Salt	0,36 g



MATCHA HERB

Experience the rich tradition of Japan with REALMIX Matcha Latte Sticks, crafted using authentically grown Japanese matcha herbs. Each sip delivers pure, earthy flavor and centuries-old wellness in one convenient stick.

NEW!

INGREDIENTS:

Sugar, instant skimmed MILK powder, whey powder (MILK), glucose syrup, coconut fat, matcha powder 7%, maltodextrin, anti-caking agent: E551, modified starch E1450, stabiliser E 340, E 452, MILK protein, emulsifier E 472e, colourant: E141, beta caroten E160a.
May contain traces of gluten, soy and milk. Store in a cool, dry place.

REALMIX

UBE LATTE STICKS

10x16g



Nutritional information per 100g

Energy value	2106 kJ (503 kcal)
Fat	27 g
Of which saturated fats	26 g
Carbohydrates	66 g
Of which sugars	50 g
Dietary fibers	0,56 g
Protein	3,0 g
Salt	0,08 g



NEW!



UBE

Made from premium purple yam (UBE), this instant latte stick delivers a smooth, creamy, and naturally unique flavor in every sip. Simply mix, stir, and enjoy a moment of colorful indulgence anytime, anywhere. REALMIX UBE Latte — where tradition meets modern convenience.

INGREDIENTS:

Sugar, coconut milk powder, purple sweet potato powder (7 %), maltodextrin, anti-caking agent: E551, modified starch: E1450.

May contain traces of gluten, soy and milk. Store in a cool, dry place.

REALMIX

ICE TEA PEACH & LEMON



Nutritional information per 100ml

Energy value	94 kJ (22 kcal)
Fat	0,02 g
Of which saturated fats	0 g
Carbohydrates	5,2 g
Of which sugars	5,1 g
Dietary fibers	0 g
Protein	0,02 g
Salt	0,04 g

INGREDIENTS:

Ice Tea Peach & Lemon with sugars and sweeteners. Water, fructose-glucose syrup, fructose, 0.2% peach juice from peach juice concentrate, 0.1% lemon juice from lemon juice concentrate, acids (malic acid, citric acid), green tea extract (0,8 g/l), black tea extract (0,4 g/l), flavours, acidity regulator (sodium citrates), antioxidant (ascorbic acid), sweetener (steviol glycosides). best before date (day/month/year) indicate on the bottom of can. Store in a dark and cool place.



PEACH

The juicy peach is healthy with its low sugar and calorie content, providing refreshment.



LEMON

Lemons make you happy? It's one of the many reasons why it's a healthy component of our unique Ice Tea. Because the Vitamin C booster also gives you the freshness kick.



REALMIX

PREMIUM ENERGY DRINK



Nutritional information per 100ml

Energy value	250 kJ (59 kcal)
Fat	0 g
Of which saturated fats	0 g
Carbohydrates	11 g
Of which sugars	11 g
Dietary fibers	0 g
Protein	0 g
Salt	0,16 g



CAFFEINE

Is one of the key components of our beverage, which brings about the desired 'energy boost'.



GUARANA EXTRACT

is one of the five main ingredients alongside green tea extract, damiana extract, mate extract, completely replacing taurine.

INGREDIENTS:

Carbonated energy drink. Pasteurized. High caffeine content: Not recommended for children or pregnant or breast-feeding women. (30 mg/100ml). Ingredients: water, sugar, acid: citric acid; carbon dioxide, acidity regulator: sodium citrates; invert sugar syrup, green tea extract, guarana extract, schizandra extract, damiana extract, mate extract, avouring, caffeine (0,030%), colour: E150c; inositol, glucuronolactone, vitamins: niacin, pantothenic acid, vitamin B2, vitamin B6, vitamin B12. Best before date(day/month/year) see the bottom of can. Store in a dark, cool place.*
NRV : Daily reference intakes for vitamins and minerals (ADULTS).



REALMIX

REAL COLA



Nutritional information per 100ml

Energy value	84 kJ (20 kcal)
Fat	0 g
Of which saturated fats	0 g
Carbohydrates	5 g
Of which sugars	5 g
Dietary fibers	0 g
Protein	0 g
Salt	<0,01 g



COLA-NUT

Discover the exquisite quality of our handpicked cola nuts, imparting an unparalleled natural and invigorating flavor to our beverage.



INGREDIENTS:

Caffeinated soft drink with sugar & sweeteners. Ingredients: water, fructose-glucose syrup, carbon dioxide (min. 3,0 g/l), natural flavour, sweeteners (cyclamates, acesulfame K, aspartame*), acidity regulator (sodium citrates, phosphoric acid), colour (sulphite ammonia caramel), flavouring (caffeine).

REALMIX Drumstick Bars 50g

SHELF LIFE: 1 YEAR



Product EAN



24x50g

Display EAN



1 EU Pallet

473x Displays per pallet
11 Layers - 43 Displays per layer
(11.532 Pieces per pallet)

REALMIX Tokyo Style Matcha Cherry Sakura 100g



Product EAN



30x100g

Box EAN



8x(30x100g)

Master Carton EAN



1 EU Pallet

128x Packages per pallet
16x Master Cartons per pallet
(3840 Pieces per pallet)

REALMIX Tokyo Style Matcha Pistachio 100g

SHELF LIFE: 1 YEAR



Product EAN



30x100g
Box EAN



8x(30x100g)
Master Carton EAN



1 EU Pallet

128x Packages per pallet
16x Master Cartons per pallet
(3840 Pieces per pallet)

REALMIX Tokyo Style Matcha Strawberry 100g



Product EAN



30x100g
Box EAN



8x(30x100g)
Master Carton EAN



1 EU Pallet

128x Packages per pallet
16x Master Cartons per pallet
(3840 Pieces per pallet)

REALMIX Tokyo Style UBE Crispy Vanilla 100g

SHELF LIFE: 1 YEAR



100g

Product EAN



30x100g

Box EAN



8x(30x100g)

Master Carton EAN



1 EU Pallet

128x Packages per pallet
16x Master Cartons per pallet
(3840 Pieces per pallet)

REALMIX Tokyo Style Black Sesame Milk Bar 100g



100g

Product EAN



30x100g

Box EAN



8x(30x100g)

Master Carton EAN



1 EU Pallet

128x Packages per pallet
16x Master Cartons per pallet
(3840 Pieces per pallet)

REALMIX Dubai Chocolate 50g

SHELF LIFE: 1 YEAR



Product EAN



**12x50g
Box EAN**



**30x (12x50g)
Master Carton EAN**



1 EU Pallet

720x Boxes per pallet
16x Master Cartons per pallet
(5760 Pieces per pallet)

REALMIX Dubai Chocolate 100g



Product EAN



**30x100g
Box EAN**



**8x(30x100g)
Master Carton EAN**



1 EU Pallet

128x Packages per pallet
16x Master Cartons per pallet
(3840 Pieces per pallet)

REALMIX Dubai Chocolate Angel Hair 50g

SHELF LIFE: 1 YEAR



Product EAN



**12x50g
Box EAN**



**30x (12x50g)
Master Carton EAN**



1 EU Pallet

720x Boxes per pallet
16x Master Cartons per pallet
(5760 Pieces per pallet)

REALMIX Dubai Chocolate Angel Hair 100g



Product EAN



**30x100g
Package EAN**



**8x(30x100g)
Master Carton EAN**



1 EU Pallet

128x Packages per pallet
16x Master Cartons per pallet
(3840 Pieces per pallet)

REALMIX Dubai White Chocolate 50g

SHELF LIFE: 1 YEAR



Product EAN



**12x50g
Box EAN**



**30x (12x50g)
Master Carton EAN**



1 EU Pallet

720x Boxes per pallet
16x Master Cartons per pallet
(5760 Pieces per pallet)

REALMIX Dubai White Chocolate 100g



Product EAN



**30x100g
Box EAN**



**8x(30x100g)
Master Carton EAN**



1 EU Pallet

128x Packages per pallet
16x Master Cartons per pallet
(3840 Pieces per pallet)

REALMIX Matcha Latte Sticks 16g

SHELF LIFE 18 MONTHS



16g



10x 16g



24x 16g



10x(24x16g)
Master Carton EAN



960x Boxes per pallet
96x Master Cartons per pallet
(23 040 Sticks per pallet)

Stick EAN

Box EAN

Box EAN



6x(10x16g)

Master Carton EAN



1620x Boxes per pallet
270x Master Cartons per pallet
(16 200 Sticks per pallet)

REALMIX UBE Latte Sticks 16g



16g



10x 16g



6x(10x16g)

Master Carton EAN



1620x Boxes per pallet
270x Master Cartons per pallet
(16 200 Sticks per pallet)

Stick EAN

Box EAN



REALMIX
Premium Energy Drink
250ml



Can EAN



9 120060 950990



Tray EAN



9 120060 950174



120 Trays per pallet
(2880 cans per pallet)

REALMIX
Ice Tea Peach & Lemon
250ml



Can EAN



9 120060 951003



Tray EAN



9 120060 950556



120 Trays per pallet
(2880 cans per pallet)

REALMIX
Real Cola
250ml



Can EAN



9 120060 950693



Tray EAN



9 120060 950709



120 Trays per pallet
(2880 cans per pallet)

REALMIX CERTIFICATES



Food Testing Institute
Authorized according to the Food Safety and Consumer Protection
Law 2006 to examine and report on food, additives, cosmetics and
items of practical use



Firma
Realmix Beverage GmbH
Talpagasse 1A
A 1230 Wien

30.04.2021

Free Sales certificate

Expert opinion regarding test report – UEB2114959 **Realmix Premium Energy Drink 250ml** (issued **30.04.2021**)

According to the results of the above mentioned test report, the sample on hand does not give any cause for complaints as defined in the Codex Alimentarius Austriacus, edition IV, chapter A3 and edition IV, chapter B 26 respectively the Austrian Food Safety and Consumer Protection Act and is fit for human consumption.

The product on hand „**Realmix Premium Energy Drink 250ml**“ is therefore free for sale in Austria, the European Union, the EEA-member states and the international market when labelled appropriately.

Expert according to §73, Austrian Food Safety and Consumer Protection Act
Food Testing Institute
Mag.DI Christine Wald



Food Testing Institute
Authorized according to the Food Safety and Consumer Protection
Law 2006 to examine and report on food, additives, cosmetics and
items of practical use



Firma
Realmix Beverage GmbH
Talpagasse 1A
A 1230 Wien

30.04.2021

Health certificate

Expert opinion regarding test report – UEB2114959 **Realmix Premium Energy Drink 250ml** (issued **30.04.2021**)

According to the results of the above mentioned test report, the sample on hand does not give any cause for complaints as defined in the Codex Alimentarius Austriacus, edition IV, chapter A3 and edition IV, chapter B 26 respectively the Austrian Food Safety and Consumer Protection Act and is fit for human consumption.

The product on hand „**Realmix Premium Energy Drink 250ml**“ is therefore free for sale in Austria, the European Union, the EEA-member states and the international market when labelled appropriately.

Expert according to §73, Austrian Food Safety and Consumer Protection Act
Food Testing Institute
Mag.DI Christine Wald



IIDZ
Austria

Halal – Certificate

No. 00418/23

The Islamic Information and Documentation Center in Austria (IIDZ – Austria) is issuing on **January 02, 2024** a Halal certificate to following producer:

REALMIX Beverage GmbH
Talpagasse 1A
1230 Vienna
AUSTRIA



The certificate will be valid until **January 02, 2025** and may be extended pending a yearly re-evaluation.

List of products:

REALMIX PREMIUM ENERGY DRINK

The Islamic Information and Documentation Center in Austria hereby certifies that the products have met the Halal requirements in according with the Islamic Law.

Günther Ahmed Rusznak

Günther Ahmed Rusznak
President



(Official Stamp)



Main office:
Islamic Information and
Documentation Center in Austria
Eduard Suess Str. 19/4
A-4020 Linz - Austria

Office:
Sternegasse 3
1010 Wien, Austria

Contact
+43 (0) 699 884 658 04
kontakt@iidz.at
www.halal-iidz.eu

REALMIX CERTIFICATES



Institut für Lebensmittelüberwachung Wien
Sporngassestraße 191, 1220 Wien, Austria

AGES 

to whom it may concern

Date: 05.10.2023
Contact: Hofrat Dr. Dipl.Ing. Christian Lechner
Phone: +43 (0) 505 55-35291, Fax: -35219
E-Mail: christian.lechner@ages.at
Reference code: 23131110
Your reference: -

Our reference: 23131110

FREE SALE CERTIFICATE

This document has been issued by the Austrian Agency for Health and Food Safety in Vienna - Official Food Control Laboratory – on behalf of the Austrian Government to certify that the following sample of an energy drink

REALMIX Premium Energy Drink 250ml

is fit for human consumption and does – labelled appropriately – comply with current Austrian Food Law regulations. It is hereby certified that any harm to human health can be excluded on basis of current scientific knowledge and currently applicable law when the product is used in accordance with the recommendations given. The product is distributed by REALMIX Beverage GmbH, 1230 Wien, Austria and is – labelled appropriate – free for sale in Austria and the European Community.

This certificate is valid from October 2023 to October 2024.

This certificate may not be amended in any way. It is the responsibility of the person to whom this certificate is issued to ensure that the product/the products may lawfully be imported into the state to which it is to be consigned.


Dr. Christian Lechner
Expert according to §70 Austrian Food Safety and Consumer Protection Act



Österreichische Agentur für Gesundheit und Ernährungssicherheit GmbH | Austrian Agency for Health and Food Safety
Sporngassestraße 191 | 1220 Vienna | AUSTRIA | www.ages.at
DVR: 0914541 | Registration court: Vienna Commercial Court | Commercial register: FN 222956z
Bank name: SAHAG F.S.A. AG | Account number: 96069506 | Bank code: 60090 | IBAN: AT30 8600 0000 9606 6505 | BIC/SWIFT: OPSKATWW | VAT No.: ATU 54089408



1 of 1

Institut für Lebensmittelüberwachung Wien
Sporngassestraße 191, 1220 Wien, Austria

AGES 

to whom it may concern

Date: 05.10.2023
Contact: Hofrat Dr. Dipl.Ing. Christian Lechner
Phone: +43 (0) 505 55-35291, Fax: -35219
E-Mail: christian.lechner@ages.at
Reference code: 23131110
Your reference: -

Our reference: 23131110

HEALTH CERTIFICATE

This document has been issued by the Austrian Agency for Health and Food Safety in Vienna - Official Food Control Laboratory – on behalf of the Austrian Government to certify that the following sample of an energy drink

REALMIX Premium Energy Drink 250ml

is fit for human consumption and does – labelled appropriately – comply with current Austrian Food Law regulations. It is hereby certified that any harm to human health can be excluded on basis of current scientific knowledge and currently applicable law when the product is used in accordance with the recommendations given. The product is distributed by REALMIX Beverage GmbH, 1230 Wien, Austria and is – labelled appropriate – free for sale in Austria and the European Community.

This certificate is valid from October 2023 to October 2024.

This certificate may not be amended in any way. It is the responsibility of the person to whom this certificate is issued to ensure that the product/the products may lawfully be imported into the state to which it is to be consigned.


Dr. Christian Lechner
Expert according to §70 Austrian Food Safety and Consumer Protection Act



Österreichische Agentur für Gesundheit und Ernährungssicherheit GmbH | Austrian Agency for Health and Food Safety
Sporngassestraße 191 | 1220 Vienna | AUSTRIA | www.ages.at
DVR: 0914541 | Registration court: Vienna Commercial Court | Commercial register: FN 222956z
Bank name: SAHAG F.S.A. AG | Account number: 96069506 | Bank code: 60090 | IBAN: AT30 8600 0000 9606 6505 | BIC/SWIFT: OPSKATWW | VAT No.: ATU 54089408



1 of 1

REALMIX REFRIGERATORS



REALMIX LOGISTICS



Pallet-loaded

20-foot Container

12 Pallets | 44.928 Cans | 1872 Trays



40-foot Container

24 Pallets | 89.856 Cans | 3744 Trays



Truck Load

30 Pallets | 86.400 Cans | 3600 Trays



Hand-loaded

20-foot Container

3150 Trays | 75.000 Cans





REALMIX®

CONTACT

REALMIX AUSTRIA

CEO: Mr. M Khannoussi

Talpagasse 1a

1230 Vienna

E-Mail: office@realmix-group.com

Phone: +43 676 61 82 18 9

www.realmix-group.com

